

Bitjet+™

High speed, versatile in-line ink jet printing system



 data sheet



Bitjet+ Digital Ink Jet Printer

Domino Bitjet+ is the most versatile high-speed, in-line digital printing system.

Adding personalisation including addressing, numbering, barcodes and graphics, enables you to offer an added value solution that complements your customer's conventional printing requirements. The extremely compact Bitjet+ print head and fast drying inks provide excellent in-line application versatility and facilitate printing on the widest range of substrates including coated paper, plastic and film. Common applications include bindery, folders, wrapping, inserters, rewinders, plastic cards, sheet feed and web press, mailing lines and label presses.



Print Performance

Up to 240dpi resolution dependent on speed, in substrate running direction, fixed at 120dpi across the 54mm (2.13") image band.

From 1.7m/s (330fpm) at 120 x 240dpi to up to 4 m/s (800fpm) at 120 x 100dpi; Bitjet+ offers effective options for integration with most of your production equipment.

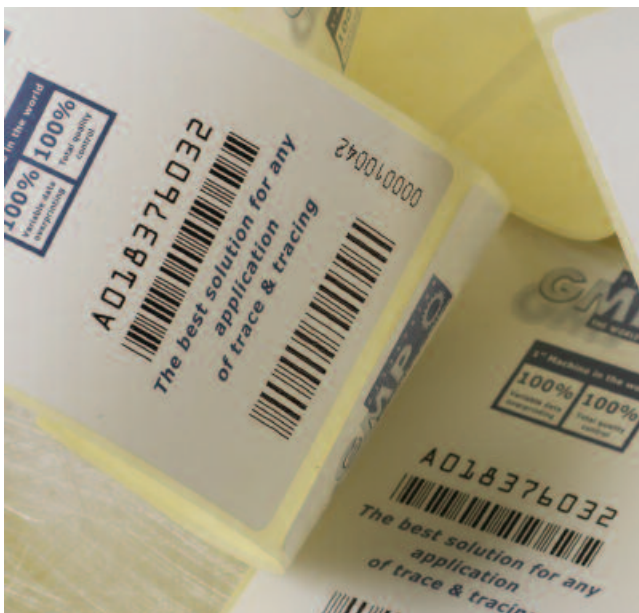
The Bitjet+ innovative RIP technology accommodates significant quantities of data transfer, such as changing graphical images, normally without limiting operational speed.



Reliability

After five years of Domino incremental development, Bitjet+ now sets unparalleled standards of continuous uninterrupted operation. Unique print head ceramic charge electrodes are thermally stable and corrosion resistant. Print head temperature management system provides accurate stable control for consistent print performance. Advanced automatic modulation and velocity set up, combined with phasing that tracks the changing environmental conditions, helps to ensure less manual intervention is required.

The result is longer intervals between head cleaning and more consistent print quality during production. Less advanced solvent binary printing solutions will often require print head cleaning every 2-4 operational hours, with the previous generation of Bitjet the recommended was every 6 to 8 hours; dependent upon the application the Bitjet+ sets a new standard, allowing a full 12 to 14 hours operation between print head cleaning.



Ease of Use

A simple ink system design, clear operator controls and semi-automatic start up and shut down help to simplify the operator's task. The Bitjet+ sleep mode means that even in colder operational conditions, printer start-up can be achieved within minutes.

The Domino Bitjet+ can be operated from the advanced Domino Editor GT Windows XP based controller, using TCP/IP protocol. This also facilitates the control of a range of other Domino printers and related equipment, such as cameras for verification and stackers for manual sorting.

Alternatively the printer may be easily integrated with a number of commercially available third party control solutions.

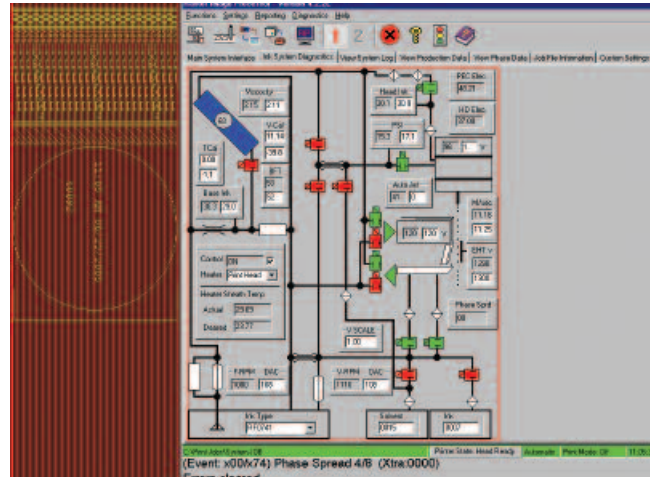


Print Image Area

Up to a 600mm (24") continuous band of variable print, 54mm (2.13") wide per product along the substrate travel direction.

Advanced Diagnostic

The Bitjet+ offers intuitive Windows based interactive diagnostics, accessible both locally at the machine and remotely, ensuring minimum downtime. The circuit board and simple LED technology provides quick visual fault indication.



Bar Hill
Cambridge



Arial 12pt
Arial 10pt
Arial 8pt
Arialpt

Mr. T. Petterson
ATC Inc.
1904 Wright Circle
Anaheim
CA 92846

Herr
Smidt Johan
Bornfeld 62
CH-6333 Aarburg



Data Matrix
2D code

Rec No. 0004762



A B 1 2 3 4 5 6 7 8 (5 7)

BITJET+

Technical Specification

General

- Up to 54mm (2.13") image band per print head
- Print resolution is fixed at 120dpi across 54mm print swathe (vertically) and running speed dependent up to 240dpi in the material travel direction (horizontally)
- Linear Speed
 - 4m/s (800fpm) @ 120 x 100dpi
 - 3.3m/s (656fpm) @ 120 x 120dpi
 - 3.2m/s (625fpm) @ 120 x 128dpi
 - 1.7 m/s (328fpm) @ 120 x 240dpi

Print Head

- Dimensions: 111mm (L) x 250mm (H) x 78mm (W)
4.4" (L) x 10" (H) x 3.12" (W)
- Conduit length: 8m (27ft)
- Prints ± 3 m in elevation from base of print engine
- Print head weight including conduit: 11.5kg (25lbs) dry
- Conduit bend radius: 165mm (6.6"), conduit is 25mm (1") Sealtite

Rack

- Rack Dimensions: 860mm (D) x 1300mm (H) x 450mm (W)
33.8" (D) x 51.2" (H) x 17.7" (W)
- Stainless steel construction
- Includes Domino Signature Editor (top), Bitjet+ Printer Enclosure (middle) and Storage Enclosure (bottom)
- Cabinet weight: 27kg (60lbs) dry

Electronic

- One main processor for specific printer functions
- One electronics board in head for print control
- PC based Domino Signature Editor (RIP)

Power Supply and External Interface

- 120V or 230V, 50/60HZ, switch selectable
- Shaft encoder input, NPN O/C or line driver, 12V or 5V

Controller

- RS232 (1 to 8) data interface
- TCP/IP - Domino Editor GT and third party controller range

Ink System

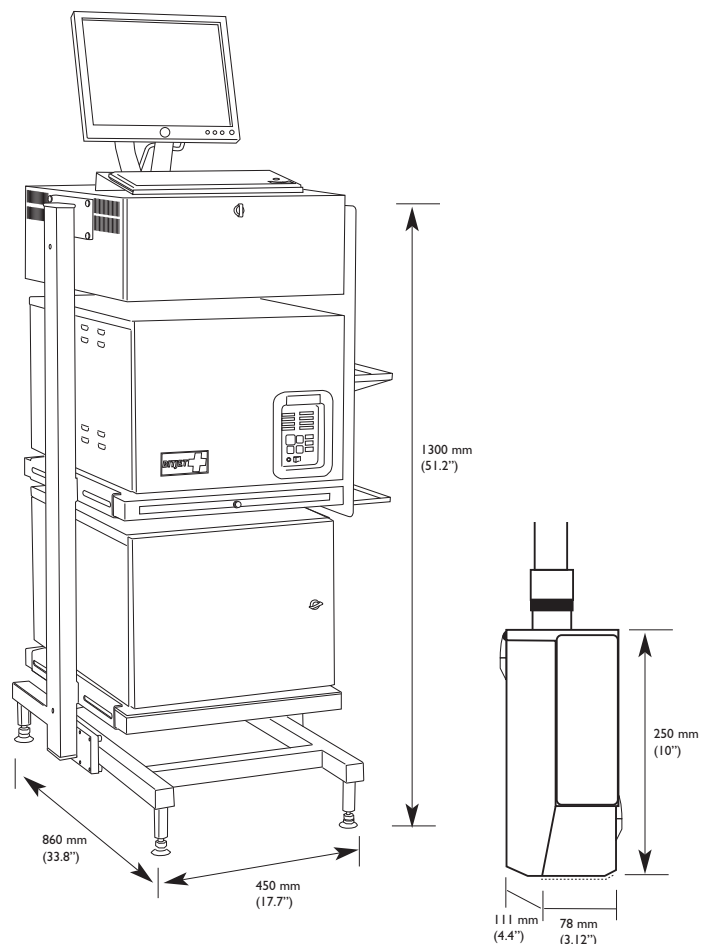
- Runtime phasing and velocity control
- Automatic set-up of modulation and jet velocity
- Automatic level control to 2.5 litres in reservoir
- Standard MEK black ink
- Custom Acetone-based inks available upon request

Fonts/Barcodes

- Text: Windows TrueType, OCR
- Barcodes: Code 39, Code 128, Interleaved 2 of 5, Codabar, POSTNET, PLANET, 4-State options and UPC/EAN
- Graphics: Bitmap, .bmp
- Datamatrix 2D codes

Accessories

- Encoder and print go inputs available on option modules
- Print head mounting brackets
- Cart and wash stations
- Rack system supplied as standard



Domino Worldwide

Through an extensive global network of subsidiaries and distributors, Domino operates in over 120 countries. This network offers customers both sales support and access to highly skilled service teams, providing technical support packages to suit the varying production environments and customer requirements across the world.



Australia

Domino (Australia) Pty. Ltd.
Unit 12
6 Gladstone Road
Castle Hill
Sydney
NSW 2154
Tel: + 61 2 9894 7833

Canada

Domino Printing Solutions Inc.
2751 Coventry Road
Oakville
Ontario
L6H 5V9
Tel: + 1 800 387 7972

China

Domino Coding Ltd.
No. 1150 Yun Qiao Road
Jin Qiao Export Processing Zone
Pudong
Shanghai 201206
Tel: + 86 21 5050 9999

France

Domino SAS
ZA du Bel Air
2 Rue Mege Mouriès
78120 Rambouillet
Tel: + 33 1 3046 5678

Germany

Domino Deutschland GmbH
Lorenz-Schott-Strasse 3
55252 Mainz-Kastel
Tel: + 49 61 34 25 050

Mexico

Domino Printing México
SA de CV
Calle 3 No. 47 Local 6F Col.
Industrial Naucalpan
53370 Edo. De México
Tel: + 52 55 5576 7979

Netherlands

Domino Amjet BV
Ambachtsweg 8
3991 LH Houten
Tel: + 31 30 636 3333

Spain

Domino Amjet Ibérica S.A.
Avenida Fuente Nueva No 14
28700 S.S. de los Reyes
Madrid
Tel: + 34 91 654 2141

United Kingdom

Domino UK Ltd
Bar Hill
Cambridge
CB3 8TU
Tel: + 44 1954 782 551

United States of America

Domino Amjet, Inc.
1290 Lakeside Drive
Gurnee
Illinois 60031
Tel: + 1 800 486 7351



www.domino-printing.com